

**TYPE PAPER TITLE HERE**  
**(ALL CAPITAL LETTERS, STYLE= “PAPERTITLE”)**

**Name of Author(s) (Include Co-Authors if same affiliation)**  
Affiliation

**Name of Co-Author(s)**  
Affiliation

**ABSTRACT (STYLE= “ABSTRACTHEADING”)**

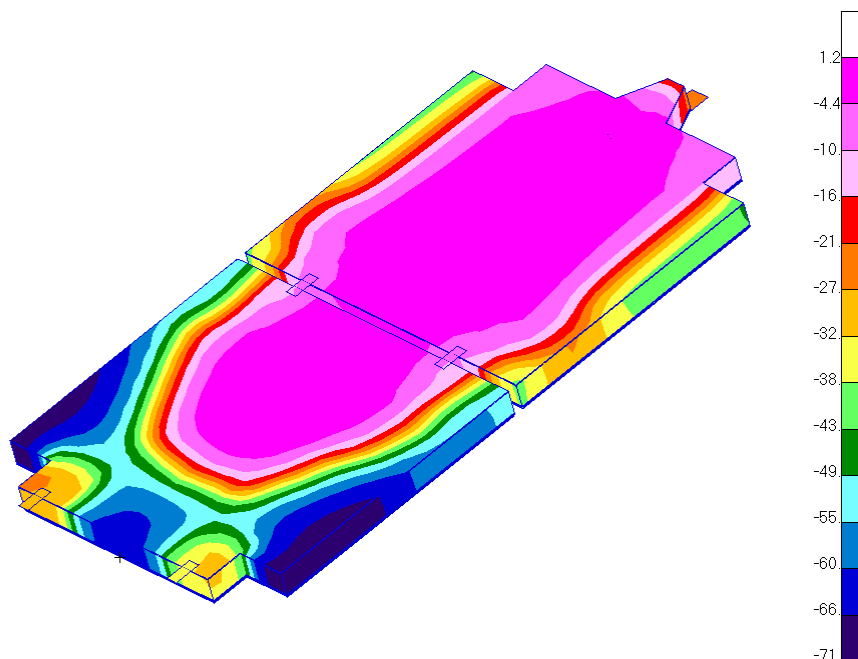
All font, sizing, and spacing for section titles are defined by Microsoft Word Style definitions (shown in parenthesis for each header). As additional headings, subheadings, and body text are added, the new text can be highlighted, then converted to the appropriate style by selecting the proper Style name from the drop-down menu on the Style toolbar. All body text is in Times New Roman 12 font (Style=“Normal”), left justified, with a single empty line space between paragraphs.

**INTRODUCTION (STYLE= “PAPERHEADINGS”)**

This paper template is provided as an aid in preparing the papers for TFAWS 03 and is not a required format. The papers are informal and the authors are welcome to submit alternate formats. The primary considerations should be content, clarity, and convenience.

**MAIN HEADING(S) (STYLE= “PAPERHEADINGS”)**

This is the main body text. Figures can be inserted within the text or appended to the end of the text section, with or without text wrapping. The example below has wrapping set to “Top and Bottom,” as opposed to allowing the text to wrap around the figure with the “Square” or “Tight” wrapping style. Double-click on the image below to see text wrapping options. Color figures are permissible, but should be able to convey the same information if displayed/printed in black and white.



**Figure 1: Figure Description (STYLE= “FigureTitle”)**

**Table 1. Table Description (STYLE= “TableTitle”)**

Table content		

SUBHEADING(S) (STYLE= “PAPERSUBHEADINGS”)

Subheading body text...

- Bulletized Lists (if req’d)
- List (cont)

1. Numbered Lists (if req’d)
2. List (cont.)

Sub-SubHeading (Style= “PaperSubSubHeadings”)

Sub-subheading text...

## **CONCLUSIONS (STYLE= “PAPERHEADINGS”)**

Conclusion text...

## **ACKNOWLEDGEMENTS (STYLE= “PAPERHEADINGS”)**

Author’s acknowledgements...

## **REFERENCES (STYLE= “PAPERHEADINGS”)**

1. Reference 1. (Note: Reference citations in the text use the number in superscript, e.g., <sup>1</sup>. Automatic endnote/reference insertion in Word is recommended.)
2. Reference 2.
3. Etc...

## **CONTACT (STYLE= “PAPERHEADINGS”)**

Optional additional contact information or background on the author.

## **NOMENCLATURE, ACRONYMS, ABBREVIATIONS (STYLE= “PAPERHEADINGS”)**

$\alpha_\lambda$       spectral absorptivity

...

---

### ***Other suggestions:***

- To utilize Greek symbols, please use the Symbol font.
- Please number figures and tables independently.
- Please number equations if they will be referred to in the text.